

Bethphage

BUZZ



Welcome to Bethphage Buzz

Welcome to the very first edition of Bethphage Buzz. Our new quarterly newsletter aims to keep you updated with what is going on across Bethphage with both the people we support and our dedicated staff. We will share with you some of the exciting projects we have launched over the last year in Shropshire and the West Midlands including GET SMART and BE Direct which are unlike anything we have done before, bringing new and interesting opportunities for our adults with learning disabilities and/or Autism/mental health.

Our vision is of inclusive communities where all people have the opportunity to live the life they choose.

We hope you enjoy our first newsletter, we welcome your feedback. Please email marketing@bethphage.co.uk if you would like to get involved or support us.

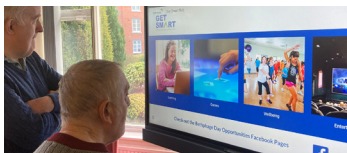
What's Going On - Day Opportunities



Oak Farm

Spring is in the air, which means our busy season at the farm is just kicking off! Amongst our usual activities we are spending lots of time preparing for our big fundraiser event **Oakfest May!** We have many exciting things planned from Shropshire Morris Dancers to a fun dog show! Pop the date in your diary and be sure to join us for a fun-filled Saturday in May.

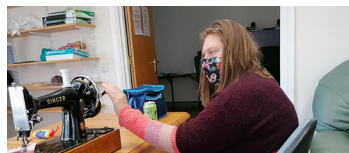
[Find out more](#)



Our Space Community Centre & Library

Our Space has been as busy as ever, as things have opened back up we have been delighted to see our Community Centre and Library full of life again! Our teenage led book-group continues to thrive and recently caught the attention of local newspapers. We have also been taking day trips out and are enjoying using our new interactive main screen provided for us by the GET SMART project.

[Find out more](#)



Innage Lane

As always, Innage Lane is a hive of activity, we have been making the most of the start of Spring by getting out and about and enjoying the sun, with games in the garden to trips around town. We have been continuing to create products for "The Nook", including light boxes and flowers made from wool. We recently celebrated Red Nose Day with our own Comic Relief Fun Day.

[Find out more](#)

www.bethphage.co.uk

8 Longbow Close, Harlescott Lane, Shrewsbury, SY1 3GZ

01743 272880



GET SMART

Bethphage are delighted to launch a new exciting project called GET SMART. The idea came about during the Covid-19 Lockdown restrictions. Our day opportunities were actively organising online events including cookery sessions, fitness, poetry reading and social and fun nights for the people we support with learning disabilities, their support workers and families.

We wanted to improve the range of facilities and equipment we have to offer and decided to fundraise to purchase 3 interactive SMART Screens for our day opportunities and Supported Living scheme.

We were delighted to receive a £10,000 Award from the Severn Trent Community Fund and £1,200 from Basil Houghton Memorial Trust to help fund this project. The investment has made a massive difference to the people we support as the interactive screens provide an excellent platform to host ongoing educational and learning programmes and social opportunities. Not forgetting of course, the fun and games and experiences we can all share using this technology.

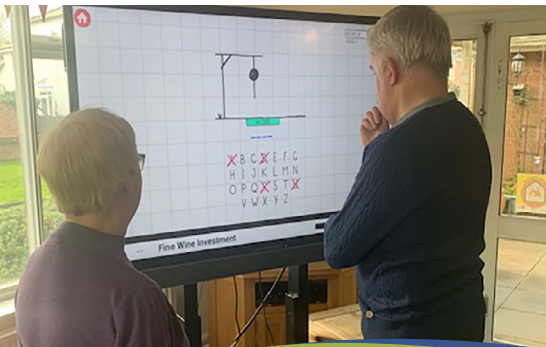


"We are bowled over by the feedback we have received from everyone. There is something there for everyone, even the opportunity to support a lady who would like to create her book of poetry. With a lot more activities planned for the year we are incredibly grateful for the grants we received to make this project happen."

Alice Blakeman – Business Development

"We're incredibly proud to have supported this fantastic new project that brings people together to learn, have fun and improve their wellbeing. I recently visited the centre in Ellesmere, and it was heart-warming to see the difference the project is making and how much enjoyment it's bringing."

Jade Gough, Severn Trent Community Fund Officer



GET SMART
Where potential comes to life

Find out more about GET SMART

If you would like to support GET SMART, please get in touch with marketing@bethphage.co.uk.

www.bethphage.co.uk

8 Longbow Close, Harlescott Lane, Shrewsbury, SY1 3GZ

01743 272880



Arden Place Open Their Doors



At our recent Open Day at Arden Place we were thrilled to welcome familiar and new faces to find out more about this modern build, supported living scheme, for adults with learning disabilities and/or Autism in their own tenancies.

Arden Place is a Bromford MyPlace Scheme with support provided by Bethphage. With purpose-built, self-contained, one-bedroom flats, communal areas including a garden, Arden Place aims to promote independence for all individuals.

Arden Place welcomed its first tenants in 2020, enabling people to take their first steps into independent living safely and securely. The current 12 residents have settled into their new homes and are enjoying the independence that comes with living at Arden Place.

All individuals at Arden Place are supported by Bethphage in a person-centred way to help maximise their independence. Close to local shops and healthcare facilities, Arden is in a great location, situated in the heart of the community. In addition to the support provided by Bethphage, individuals benefit from having Bromford's Housing Enabler on site offering housing support. We currently have only 2 vacancies left at Arden Place and are looking to welcome more people into their new homes this year.

"It's very rewarding to finally see the residents happy and settled in their apartments. They all get on so well and enjoy getting together in the communal areas and garden."

**Claire Parker -
Bromford's Housing Enabler**

"The feedback from everyone at Arden has been amazing but most importantly, this scheme has enabled them to become more independent and there is a real social buzz at Arden Place."

**Adrian Smallwood -
Bethphage Service Manager**



Find out more about Arden Place

If you would like more information about Arden Place please contact:

Adrian Smallwood -
supportedliving@bethphage.co.uk
or Claire Parker -
claire.parker@bromford.co.uk

www.bethphage.co.uk

8 Longbow Close, Harlescott Lane, Shrewsbury, SY1 3GZ

01743 272880



Bethphage celebrates another CQC “Good” rating

Bethphage are delighted to receive another “Good” rating by care regulator the Care Quality Commission (CQC). This time it was for our Shared Lives Service which we operate throughout Shropshire.

Shared Lives is a different way of providing much needed support to adults with learning disabilities, mental health needs, care leavers, older people with dementia, people escaping domestic abuse or those leaving hospital. At a recent speech for the Royal College of Physicians, Sajid Javid, Secretary of State for Health and Social Care called Shared Lives care “an exciting model of social care” and he heralded it as “the kind of innovative social care service, of which there are many, that we need to grow.”

People are supported by a Shared Lives Carer in the Carers family home which means they can embrace family life and become part of the community. Bethphage have been running the Shared Lives service on behalf of Shropshire Council since February 2020.



Our CQC inspection report stated:

“People lived with carers as part of the family. People who visited for respite also felt part of the family”. One person being supported by Shared Lives Carers told CQC, “I have a great life, I’m very happy and very busy.”

“It is a privilege to lead such an innovative, inclusive and caring scheme. The CQC rating, along with the feedback, is a testament to the commitment and dedication of both the team and all our Shared Lives carers. The pandemic presented varied challenges which we navigated, overcame and learnt lessons from. I offer my continued gratitude to all those involved and feel proud of our achievements.”

Stacey Bourne - Shared Lives Manager



Learn more about Shared Lives

If you are interested in Shared Lives or want to become a carer, please contact us on 01743 272880 or email shared-lives@bethphage.co.uk.

Find out more

www.bethphage.co.uk

8 Longbow Close, Harlescott Lane, Shrewsbury, SY1 3GZ
01743 272880



Friends of Bethphage



Friends of Bethphage aims to create a network of supporters to help increase experiences and opportunities for individuals we support.

Help us achieve our vision by becoming a Friend of Bethphage and sign up to receive our local newsletter.

You can support us in any way you choose; from subscribing to our newsletter, following us on Facebook or Instagram and sharing our posts, attending or helping at our events, or making small donations towards unfunded activities or our projects for the people we support.

[Support Bethphage](#)

Our Projects



A new Farm Vehicle

Help us fundraise for a ride-on lawnmower and strimmer.

[Find out more](#)



A night at the movies

Help us fundraise for camera and filmmaking equipment.

[Find out more](#)



Strictly Come Dancing

Help us fundraise for gym and exercise equipment.

[Find out more](#)



Support our charity

Make a small donation today and receive an exclusive Bethphage pin badge. After making a donation please email your contact details to marketing@bethphage.co.uk or on our JustGiving page to claim your pin.



[Make a donation](#)

www.bethphage.co.uk

8 Longbow Close, Harlescott Lane, Shrewsbury, SY1 3GZ
01743 272880



Eyes on Recruitment

This year we have welcomed a new member to our HR team; Jo joined us in January as our Recruitment Coordinator, a role created in response to the current climate in the Social Care sector. Jo has already made an impact; you may have even seen her around Shropshire at local job fairs.

Coming from a care and support background herself, Jo has a great insight into what it's like to work on the frontline and has lots of ideas on how we can streamline our recruitment process and attract more high-quality candidates.

We hope you will join us in welcoming Jo to the Bethphage team.



Why become a support worker?

Find out more

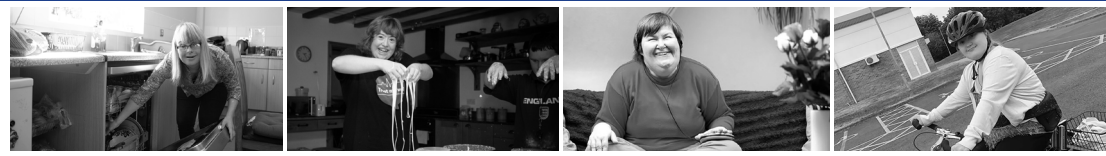
In addition to a new Recruitment Coordinator, we have also been able to introduce a £300 welcome bonus to all new employees to be paid upon the completion of their probation. This joins our Simply Health Cash Plan, comprehensive paid training programme (including supporting staff to obtain their Level 2 & 3 in Health and Social Care), long service rewards, birthday recognition, refer-a-friend award as some of our staff benefits. We hope this bonus will attract new people into the Social Care sector.

In recognition of the difficulties of the past two years and our staff's dedication and hard work, together with the value which Bethphage places on having well trained, experienced staff, we have also decided to pay a £300 Loyalty Bonus to our current staff.

www.bethphage.co.uk

8 Longbow Close, Harlescott Lane, Shrewsbury, SY1 3GZ

01743 272880



BE Direct



The Bethphage BE Direct film project has been very busy over the past few months. Our filmmakers at Oak Farm have now made 10 movies in a variety of genres. We have seen amusing comedy films, stop frame animations through to serious documentaries and even a horror extravaganza!

The guys have been developing their planning and storyboarding skills, along with thinking about camera angles and camera shot sizes - long shot, mid shot, close up. It has been really interesting to see how every group has produced such different and entertaining movies. Everybody taking part has generated original ideas and collaborated so enthusiastically in all the tasks necessary to create something great.

Keep your eyes peeled for what we get up to next!



Learn out more about BE Direct

If you would like to know more about BE Direct contact marketing@bethphage.co.uk.

[Find out more](#)



Thank you for reading

If you would like to get involved or support any of the activities/projects please contact:

marketing@bethphage.co.uk



Bethphage
BUZZ



www.bethphage.co.uk

8 Longbow Close, Harlescott Lane, Shrewsbury, SY1 3GZ
01743 272880